



Lincolnshire Safeguarding Children Partnership Annual Report 2023



(September 2022 – September 2023)

Foreword

I am pleased to introduce the 2022/23 Annual Report of the Lincolnshire Safeguarding Children Partnership. This report outlines the work and coordination of the key agencies responsible for safeguarding highlighting examples of good practice.

Whilst public services continue to face many challenges I am pleased to report that partners in Lincolnshire continue to prioritise their response to safeguarding children. It is abundantly clear that leaders and front line staff in the County have successfully responded to the pressures they have faced from the Pandemic and continually strive to improve their services. In April this year Children's Services were inspected by Ofsted and received an 'outstanding' grading.

It was reported that 'Partnership working is one of Lincolnshire's strengths. Strong partnerships at the strategic senior level are mirrored by strong effective operational multi agency working'.

These positive statements clearly reflect the determination of all those concerned and agencies should be proud of their achievement. During the year we have also seen developments in the Police response to Safeguarding where the Chief Constable has increased resources in this complex area of investigation. This is an important commitment to drive improvement and we look forward to evaluating the impact of this decision.

In addition our Health partners continue to provide strong and effective services. The local Integrated Care Board together with the three providers of hospital, mental health and community services are highly respected in the partnership having specialist expertise over a large range of complex areas.

Overall the frontline agencies should be proud of their achievements but of course there is no room for complacency. Whilst maintaining a high standard we must focus on future demand and how we can respond to it. To achieve this we must continue to work closely with our partners both locally and regionally where we can support each other and identify good practice.

Finally I would like to thank the safeguarding partners for their drive and determination to keep children safe in Lincolnshire. I would also like to thank Stacey Waller and her team for the support they have given me personally and for the way they professionally support the Partnership.

Chris Cook
LSCP Independent Chair

Introduction

The purpose of the multi-agency safeguarding arrangements, as set out in Chapter 3: Working Together to Safeguard Children 2018 is to support and enable local organisation and agencies to work together in a system where:

1. Children are safeguarded and their welfare promoted,
2. Partner organisations and agencies collaborate, share and co-own the vision for how to achieve improved outcomes for vulnerable children,
3. Organisations and agencies challenge appropriately and hold one another to account effectively,
4. There is early identification and analysis of new safeguarding issues and emerging threats,
5. Learning is promoted and embedded in a way that local services for children and families can become more reflective and implement changes to practice,
6. Information is shared effectively to facilitate more accurate and timely decision making for children and families.

This annual report will showcase the work of the partners and reflect on the impact the arrangements have had for children and families across Lincolnshire.

The LSCP Strategic Priorities for 2022-2025 remain as:

1. Tackling Child Exploitation
2. Enhancing the Emotional Wellbeing of Children and Young People
3. Promoting Healthy Relationships
4. To identify and reduce the impact of neglect on children and young people
5. To Identify and reduce the impact of sexual and physical harm

A joint area of assurance has also been agreed between the LSCP and the Lincolnshire Domestic Abuse Partnership to ensure that work is co-ordinated

6. Area of Assurance: To identify and reduce the impact of Domestic Abuse on children, young people and their families.

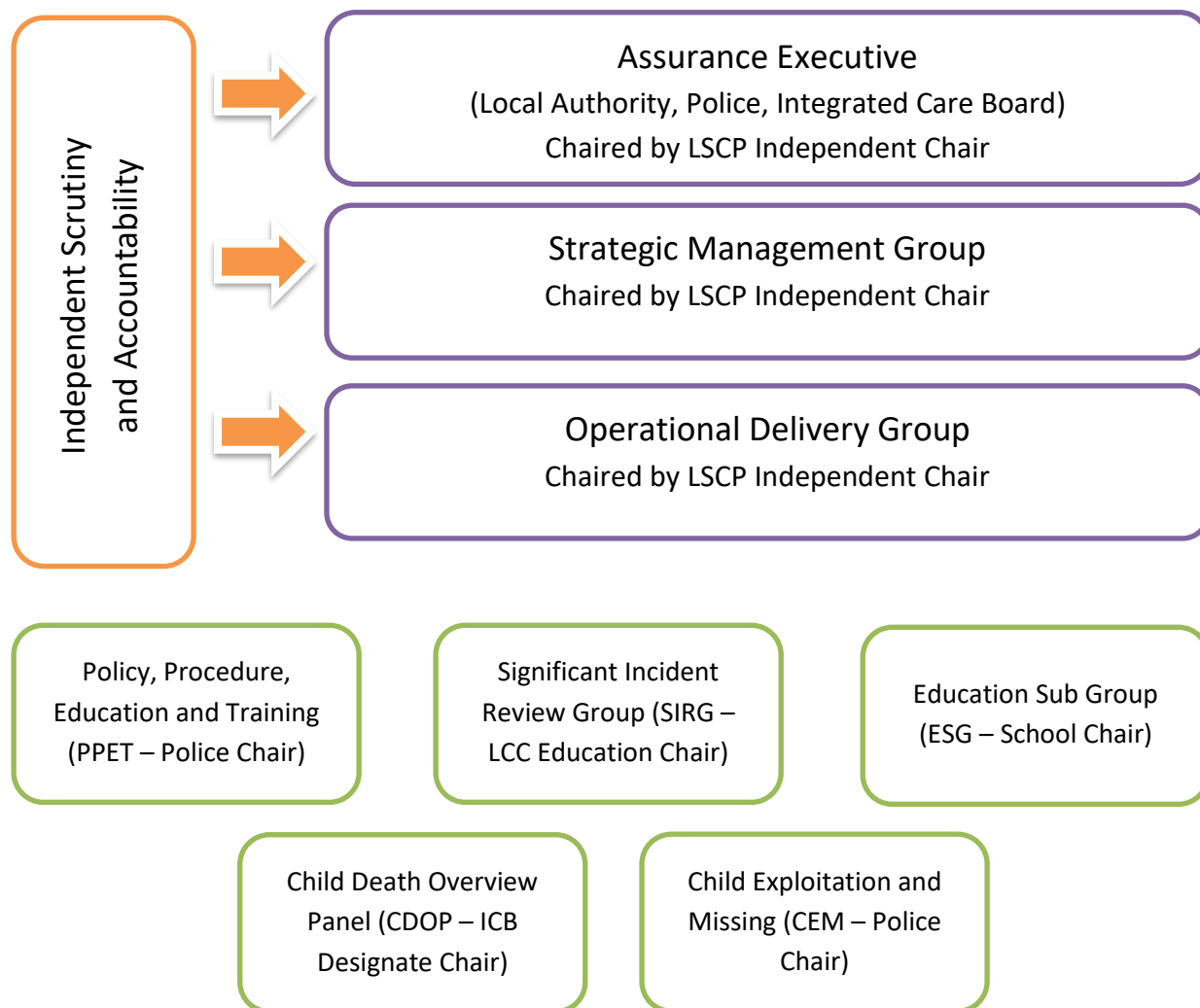
Our Partners and Partnership



Lincolnshire prides itself on the strength of its local Safeguarding Children Partnership to effectively work to safeguard and promote the welfare of children across the county. The LSCP extends beyond the three key statutory partners and welcomes contributions, challenge and support from a wide range of agencies, including faith organisations, charities, and education providers. Partners contribute to an active work plan and deliver across a number of agendas and priorities. This work is co-ordinated and overseen by the LSCP Sub-Groups, Operational Delivery, Strategic Management groups and the Assurance Executive.

Financial contributions 2022/2023:

Partner	Contribution
Lincolnshire County Council	£162, 435
Office of Police and Crime Commissioner	£74,933
Integrated Care Board	£103,031
Districts Councils (x7)	Total £28,070
Total core contributions	£368,459



Scrutiny and accountability

All partners in Lincolnshire are held accountable for their statutory duties through mutual challenge and the scrutiny offered by our Independent Chair. Through effective and robust relationships, our Chair is able to identify opportunities for the partnership as well as ensure that partners continue to collaborate to ensure that children are best protected and safeguarded in Lincolnshire. By chairing key strategic meetings, the Independent Chair is able to keep abreast of partnership activity and provide objective challenge of our assurance activities to ensure co-ordinated and effective multi agency working in our County.

In April 2023, along with the Business Manager, the Independent Chair presented last year's Annual Report to Lincolnshire County Council's Children and Young People's Scrutiny Committee. As always,

members of the Committee were very engaged with the work of the LSCP and provided further independent scrutiny of Lincolnshire's multi-agency arrangements with a clear focus on the outcomes and impact of our activity for children, young people and families.

Multi-Agency Audit

The LSCP Quality Assurance Framework identifies the need to complete one multi-agency audit per year. In reviewing the suite of policies relating to children and young people who display Harmful Sexual Behaviour, partners agreed that a greater understanding of cases that feature Harmful Sexual Behaviour should be the audit focus in 2022.

The audit was conducted between October 2021 and August 2022, with the work on the report and reviewing the policies and pathways being undertaken between September 2022 and September 2023. Six young people's cases were identified by members of the group to demonstrate a breadth of need, behaviours and diversity and these cases were audited by the partners.

The audit can offer assurance to the partnership that services to children and families and Lincolnshire continued to be delivered to a high standard. Through the audit returns and the challenge day, many areas of good practice were clearly evidenced, and these are highlighted throughout the report in green.

Good Practice: One case discussed at the Challenge Day highlighted the positive involvement from partners involved with the young person. Partners were able to effectively share safeguarding concerns that the young person presented due to the effective multi-agency Strategy Meetings that were held. These meetings allowed for escalation and de-escalation in Children's Services dependent on the needs of the young person and their family at the given point. The Strategy Meetings allowed for concerns to be shared around the family resistance and were managed through professional networks, joint supervisions and collaborative working.

Good Practice – The positive impact of sharing information and supporting multi-agency practice was highlighted in another case in which bail conditions could have impacted the interventions put into place. The school worked closely with other agencies to fully understand the bail conditions and work involved with the young person but fully adapted their own input to support the young person to continue to access their education during this time, as they were working towards their GCSEs. Further to this, this work allowed the young person to maintain friendships with peers and be involved in the school community. The work of the school, in this instance, acknowledges the dual element of the young person whilst on the pathway; as both a vulnerable person in themselves whilst being someone who is displaying Harmful Sexual Behaviour.

Through this audit, partners were able to fully understand current practice relating to Harmful Sexual Behaviour supporting the full review of the 'Children and Young People who Display Sexually Inappropriate or Harmful Behaviours' policy and pathway. Positive comments were received on how the new policy supports the duality of the young person, as both a vulnerable person and as a young person displaying Harmful Sexual Behaviour. Further to the recommendations around policy review,

the Brook Traffic was acknowledged as being beneficial in identifying when behaviours need support. The LSCP was able to extend the licence of the training allowing more professionals to access this.

During this period, the development of the LSCP Performance Scorecard has also continued and is a further means of capturing quantitative evidence to support the impact of the multi-agency safeguarding arrangements against the Strategic Priorities of the partnership. The suitability of data historically gathered has been reviewed by individual partner agencies and peer reviewed through the Operational Delivery Group (ODG) and Strategic Management Group (SMG) and a newly formed multi-agency task and finish group. This has enabled the ability to produce a written summary of the collective datasets with a comprehensive qualitative narrative from lead agency members. These processes have facilitated the implementation of the scorecard action tracker which is monitored within ODG and SMG providing a greater understanding of our collective strengths and any areas requiring development. On production of the Scorecard at our SMG in September 2023, partners were assured by the data in that all priorities have been RAG rated as green indicating that there is clear evidence that the partnership is actively working towards achieving each strategic objective. Where appropriate, individual agencies have clear plans to investigate or act to further improve service delivery/outcomes.

Progress against Strategic Priorities

As well as the work of the Subgroups as detailed below, where appropriate, additional groups are established to deliver against specific areas of business. Of note this year has been the continued work against the priority focused on the identification and reduction of the impact of sexual harm. In November 2022, more than 100 representatives from almost 30 organisations across Lincolnshire attended an event to launch the Partnerships commitment to improving our collective response to Child Sexual Abuse. This was followed by the development of an LSCP Child Sexual Abuse Strategy, and the launching of the response resources with the aim of improving the knowledge, skills and confidence across the workforce as well as strengthening the multi-agency response to child sexual abuse. The impact of this work will be monitored over the coming years through the Performance Scorecard and a multi-agency audit in 2024.

As part of our collaborative working across the partnerships, it was agreed that the oversight and assurance of Operation Encompass would fall under the remit of the LSCP Education Subgroup. Operation Encompass is a national scheme through which schools are notified of when the police are called out to respond to a domestic incident and there is a child at the property. Whilst this is a Police led initiative, the LSCP will undertake the assurance activity and report back to our Operational Delivery Group and the Lincolnshire Domestic Abuse Partnership twice a year to ensure that children are being safeguarded in these circumstances and as part of our work on our area of assurance: To identify and reduce the impact of Domestic Abuse on children, young people and their families.

Learning from a number of tragic deaths by suspected suicides in recent years led to a number of recommendations being made by the partnership. These have now all been adopted by the Public Health led Suicide Prevention Steering Group and embedded within their action plan. Progress has been good, with specific training being commissioned, alignment of work with the Child and Young People Mental Health Transformation Programme, and the commissioning of a dedicated

bereavement service. All work which continues to enhance the emotional wellbeing of children in Lincolnshire.

[Significant Incident Review Group \(SIRG\) – Input from John O'Connor, Head of Service for Education Support, Lincolnshire County Council and Chair of SIRG](#)

The group has seen a few changes to its membership as some of our long-standing colleagues have been promoted to other local areas, consequently we have welcomed some new members. To help with the induction and training of other staff we have welcomed a few observers to meetings too. Meetings returned to being face-to-face in the main.

September 2022 saw the publication of the national panel's '[Child Safeguarding Practice Review Panel Guidance for Safeguarding Partners](#)' which gave further guidance and examples of incidents that might reach the threshold for a rapid review or a local child safeguarding practice review (LCSPR). In response to this one of the cases considered by the group previously was now thought to reach the threshold for a rapid review so was undertaken. This review centred around the tragic death of a baby who was mauled by a dog. Despite a lot of the work having been completed off the back of the previous desktop review, it did lead to a media campaign in December in readiness for the Christmas period when there is typically a rise in incidents involving dogs and children and a full review of the Safeguarding children in the Presence of Dogs Policy (previously Dangerous Dogs Policy).

The National Panel published some examples of [anonymised rapid reviews](#) with commentary to help panels understand elements of good practice in report writing. The group reviewed these and reflected on our own reports published.

Two additional reports, published by the national panel, were considered by the group and compared and reflected on what they meant for practice in Lincolnshire, the reports were:

- [Bruising in non-mobile infants](#)
- [Multi-agency safeguarding and domestic abuse](#)

Like last year we have been involved to varying degrees with a number of other areas in Rapid Reviews or LCSPR's (Nottinghamshire, Peterborough, Cambridgeshire, West Sussex and Essex) leading to the generation of guidance on how to work with other areas. The guidance was generated to ensure a degree of consistency in engagement and information sharing when our agencies might hold information of use to their reviews.

There were 5 serious incident notifications, 3 referred from the child death overview panel of teenage suicides. All three were desktop reviewed but did not reach the threshold for a Rapid Review. Recognising the support that children seek from their peers, the LSCP co-ordinated and distributed information to schools to display for children and include in newsletters to parents on where to seek support. The two other notifications did reach the threshold and both progressed to a Rapid Review but did not need to proceed to a LCSPR afterwards. After all RR a learning bulletin for colleagues is produced and stored on the LSCP training portal: [Enable](#). SIRG has continued to progress and monitor recommendations from these reviews.

One of last year's Rapid Reviews was deemed necessary to continue on to a joint local Child Safeguarding Practice Review and Domestic Homicide Review (DHR) with NHS England's Mental Health Homicide Review running in parallel. This was completed and submitted to the Home Office. We are currently awaiting their response.

Impact:

The partnership received a briefing for professionals on who to notify if they suspect a child is missing education which was a learning point from another area's review of a family that spent a brief amount of time in Lincolnshire.

In response to the National Panel's review of Star and Arthur's deaths we updated the Professional Resolution and Escalation Policy and created a flow chart to help practitioners know who they should speak to on patterns of professional disagreement.

Reporting of attendance at strategy discussions by the three statutory partners was identified as an area to increase transparency and to ensure that this is monitored by the partnership, this was also an outcome from the Star and Arthur review.

Capacity for the Police to deliver the Domestic Violence Disclosure Scheme (DVDS) has increased as a result of a Rapid Review to make responses to families more timely.

Outcomes:

- The partnership has assured itself of its local practice when comparing Lincolnshire's practice with national reviews
- All learning bulletins from reviews are stored on Enable and easily accessible to any member of partnership organisations
- Children and families benefit from the review of learning that takes place from each review

[Policy, Procedure, Education and Training Subgroup \(PPET\) \(Mandy Radley-Mitchell, LSCP Policy and Audit Officer\)](#)

The Policy, Performance, Education, and Training sub-group (PPET) develops, reviews, and maintains the policies of the Lincolnshire Safeguarding Children Partnership. The purpose is to ensure that a fit-for-purpose manual is available for all professionals and the public. The sub-group is influential in what training and educational content is provided for professionals across the Partnership, including providing our own suite of training packages. By working together, the collective knowledge, skill, and expertise amongst its membership ensures that all documents, guidance, and training is usable by every professional.

15 policies and procedures have been reviewed during the scope of this annual report. Some have been discussed within PPET whilst some have had a full review through dedicated Task and Finish groups. These are all published in the Partnership's [Policy and Procedures Manual](#).

Policy Impact Presentations on:

- Professional Resolution and Escalation Policy
- Safeguarding Children at risk of Criminal Exploitation
- Responding to Abuse and Neglect
- Discharge Planning from Physical Healthcare Hospitals when there are Safeguarding Concerns about a Child
- Bruising in Non-Independently Mobile Babies and Children
- Safer Sleep Guidance

In 2021, partners reviewed the Safer Sleep Guidance to ensure that it tackled a multi-agency approach. This year, the University of Durham established a project to co-produce, pilot, and evaluate a multi-agency workforce training and implementation programme for SUDI prevention among vulnerable families in County Durham. As a part of this project, UoD evaluated other county's approaches and identified Lincolnshire as one of the strongest approaches to this. Partners were invited to attend and present at a Safer Sleep workshop held by County Durham in May 2023. ULHT and LCC Public Health attended the workshop and collated this attendance into a Policy Impact Presentation. They were able to highlight that Lincolnshire's guidance was the 8th most accessed document on our manual and that it had been accessed by 660 unique visitors in the previous 12 months. Further to the guidance, Lincolnshire's attendees highlighted the range of professionals accessing the Safer Sleep e-learning package. Feedback showed that it was clear Lincolnshire had approached Safer Sleep through multi-agency response and that all professionals were supported in identifying risks to this issue.

Case Study:

The Policy Impact Presentations highlight a positive impact on young people, families and professionals through the work completed on reviewing policy and procedures. In May, Ali Balderstone from LCHS presented on the impact of a policy review. Bruising in Non-Independently Mobile Babies and Children had been reviewed in 2022 and had been added to the manual in April 2023. As LCHS had requested the policy review, they wished to use the Policy Impact Presentation to reflect on the changes and highlighted that changes had been shared via newsletters, supervisions and in training. In one case study, the new timescales in policy allowed LCHS and Social Workers to work together for a timely assessment of a baby whilst another case study highlighted the timescales supported LCHS escalating appropriately to resolve this issue. The clear parameters and expectations detailed in the policy allow for improved multi-agency working with regards to a shared understanding of what each agency should be doing and when and thus allowing for appropriate challenge when this is not being achieved.

[Training Report September 2022-2023 \(Rachael Hunt, LSCP Training and Development Officer\) Full report in Appendix A](#)

The LSCP multi-agency training is an effective way of bringing together professionals from different agencies to gain a better understanding of each other's role and responsibilities for safeguarding and make a positive difference to frontline practice.

The training team have continued to adopt a hybrid delivery model, which includes a mixture of face-to-face, virtual, and online learning. Feedback from practitioners and partners supports this model of delivery.

"It was very informative and staff delivering were again very thorough mixing conversation, activity, and group discussion. I always love the mix of services at the face-to-face events, and it gives a better insight into other roles and the difficulties they face."

(Disguised Compliance, 2023)

"The course had a good mix of eLearning and face-to-face either in a classroom or via Teams."

(Inter-agency Safeguarding Children module 1-4, 2023)

There have been various updates made to courses in response to feedback, rapid reviews and learning bulletins. These updates have been undertaken collaboratively across the partnership, with a range of practitioners and agencies to ensure current practice and process is considered within the redesign. These developments have included extending several of our virtual workshops to ensure further exploration of specific topics in depth, which were identified as challenges in practice and within feedback.

As well as responding to practice developments and learning, the training team are committed to ensuring that the impact of our training can be evidenced. Over the coming 12 months, there will be a real focus on this area of work in the team and we look forward to reporting on the outcomes in our next Annual Report.

A single agency quality assurance process has been undertaken in the last year. This process monitors the content and delivery of partner single-agency training to ensure it meets the LSCP, Lincolnshire Adult Safeguarding Adult Board (LSAB) and Lincolnshire Domestic Abuse Partnership (LDAP) training criteria. Training content was self-audited and then peer reviewed using a Red, Amber, Green rating system by another agency. Overall, organisations were mostly rated green. Several organisations were able to identify a small number of (amber) actions that will strengthen their current training.

As an overview of face-to face and virtual training, please see the table below which outlines the number of courses delivered and the attendance and completion figures. These have been provided alongside last year's figures and provide a largely improving picture. The Impact on drug and alcohol

use on families course has been updated and is now being co-delivered with We are With you, we hope to report higher figures next year.

Course Title	Number of courses	Number Completed/ Attended	Number of courses	Number Completed/ Attended
	Nov 2021 - Oct 2022	Nov 2021 - Oct 2022	Sep 2022 – Sep 2023	Sep 2022 – Sep 2023
Inter-Agency Safeguarding Children and Young People Module 1	n/a	1046	n/a	1020
Inter-Agency Safeguarding Children and Young People module 2	38	410	43	586
Inter-Agency Safeguarding Children and Young People module 3	38	399	43	570
Inter-Agency Safeguarding Children and Young People module 4	37	411	24	468
Child Exploitation	10	94	11	183
Recognise Disguised Compliance and Disengagement within Families	9	100	8	110
Recognising and Supporting Parent in Parental Conflict	11	85	10	85
Domestic Abuse in Practice	15	123	9	131
Nurturing wellbeing in Children & Young People	5	82	4	62
Safer Recruitment	4	63	6	85
Online Safety	6	51	7	60
Impact of Drug and Alcohol Use on Families	3	24	1	8
Child to Parent/Carer Abuse Training	1	17	4	53

[Child Exploitation and Missing Subgroup \(Input from Andy Cook, Head of Service, Youth Offending Team and Future4Me, Lincolnshire County Council and Chair of CEM\)](#)

Working Together to Safeguard Children (2018) outlines that it is the responsibility of all partner agencies to identify all children and young people at risk of exploitation to prevent them from becoming victims, and it is the responsibility of all partner agencies to protect and safeguard all children and young people who are experiencing exploitation from further harm. Tackling Child Exploitation remains a key area of focus and a Strategic Priority for the LSCP.

The purpose of the Child Exploitation and Missing Subgroup is to develop, review, and maintain strategies, processes, and resources to ensure children are safeguarded and live free of the threat of exploitation and other emerging threats to their safety and well-being.

The group ensures a strategic focus upon the following areas:

- Child Sexual Exploitation
- Child Criminal Exploitation (including County Lines)
- Missing Children
- Trafficked Children

The group works in collaboration across the partnership to promote effective working relationships between member agencies, professional groups, and voluntary organisations to safeguard children from Child Exploitation.

In April 2023 an inspection was undertaken by Ofsted of the local authority Children Services in Lincolnshire with a specific focus upon our collective partnership arrangements to tackle missing children and exploitation. The key findings and strengths of the Ofsted inspection in relation to missing children and exploitation are highlighted below:

*'The vast majority of children who are reported as missing from home receive a timely and effective service. Return home interviews are completed with the child by the professional considered best placed to do this. For some children not known to social care, this is done by the child's school and offers the child the opportunity to share their experiences with someone they know and trust.... ...There is a strong coordinated partnership approach to children who are at risk of child criminal exploitation, which is effective in identifying and responding to children's changing needs and risks' – **Ofsted April 2023***

We are proud of this recognition of our work and are aware that effectively tackling exploitation can only be achieved by all agencies working in collaboration as we continue to do through the LSCP. Within the inspection Ofsted recognised the work we undertake in partnership within Lincolnshire which is built upon mutual trust and a strong desire for all agencies to play their part to minimise risks to children within Lincolnshire.

However, the nature of exploitation of children is complex, dynamic and continually changing as perpetrators seek new ways to exploit children. A key aspect of our work is maintaining a strong awareness of regional and national trends which highlight and emerging risk to children in Lincolnshire.

Our training offer has enhanced the awareness and risks of criminal exploitation, and this has aligned with an increased number of screening tools submitted by practitioners. However, we must ensure that the focus around sexual exploitation is not lost, and this is a key feature of our training/learning and development framework.

The worries in respect of county lines have been longstanding, particularly in light of criminal gangs using transport networks within Lincolnshire. Through our strategic group we have strengthened the role and input of the partnership in tackling county lines, and we are promoting a shared response to our county lines intensification weeks.

We continue to recognise that many children who are engaged in criminal behaviour, particularly linked to drug supply, are also victims through being exploited and the partnership has prioritised a 'child first' principle to avoid criminalisation wherever possible. This is supported through the revisions made to the LSCP Criminalisation of children protocol, which widened our commitment to all children and not only those within care settings.

Our **MACE Development Plan** reflects the work focussed on improving the effectiveness of our local MACE arrangements including support for victims and disruption tactics aimed at locations and persons of concern. The plan co-ordinates the activity in this area and maintains any updates. The effectiveness of these arrangements are monitored through the Quality Assurance Framework which takes a wider look at the partnership response to exploitation in Lincolnshire.

The **Child Exploitation Quality Assurance Framework** sets out the arrangements in Lincolnshire to ensure there is a clear and succinct approach to understanding how well our MACE arrangements are working, checking the impact of services for children, and learning from what we find to guide our improvement actions.

Our strategic and operational responses to exploitation have generated an increased awareness for all professionals within the LSCP. Our workforce has access to reports, data and analysis that enables them to link children and locations where risks have been identified. This is promoting a more proactive response to tackling exploitation at a locality-based level within our communities. Our schools at an organisational level are supported by educational input around emerging risks and also practical support at a case level is provided through our MACE meetings.

Within a contextual approach we have sought to provide safety to children through enforcement and disruption activity using intelligence to bring perpetrators to justice. Through our interventions with children and families, we are able to offer support around emotional well-being, trauma and also provide pathways into positive activities that minimise the risks for vulnerable children.

MACE Level 2 shared contextual information with all agencies around a person of concern who was living in Lincoln, and using children from the area to move drugs on his behalf. It was also observed that he was making children internally conceal these drugs which amounted to sexual abuse. To disrupt his activity and continued exploitation of these children, work was completed with Probation and housing providers to move him out of Lincoln. This was successful and there was a decline in concerns whilst he was moved. Probation were then in a position to recall him to prison to serve his remaining sentence in custody.

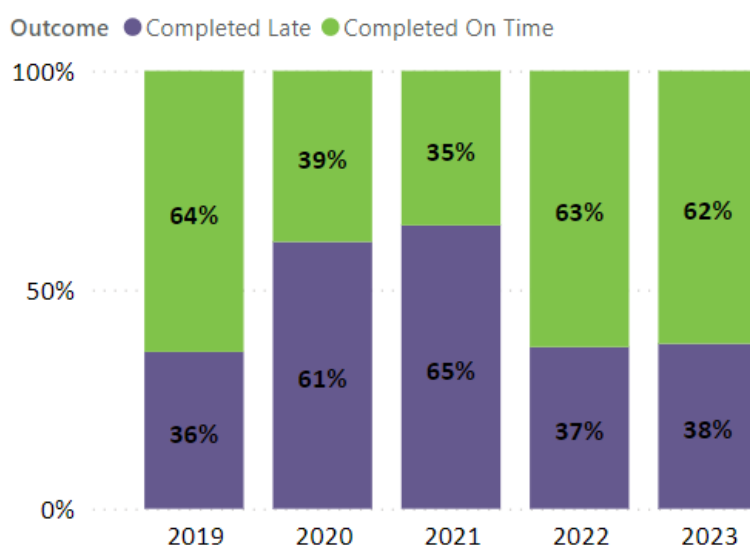
LSCP Analyst

Through data analysis we have gained a better understanding of the profile of child exploitation, how to combat it and how to address its impact on children, families, and the community. The on-going support of our dedicated CE analyst to support operational and strategic MACE has helped our ability to identify hot spots and areas of concern.

This LSCP Analyst role works closely with LCC's CE and Missing Coordinator and Lincolnshire Police to prioritise a response in conjunction with and reports on the episodes of missing children in the county. This analytical support is invaluable and has enabled a suite of reports to be available to strategic and operational managers to provide them with insight, awareness, and assurance in respect of key performance measures, trends or themes which may warrant enhanced scrutiny.

Our performance related to missing children and completion of return interviews has remained consistently strong through this period. Between March 2022 and April 2023 there were **825** return interviews completed for all children which equates to **85%** of those requested. The overall timeliness of completion of those interviews demonstrated that **85%** were completed within the 72-hour timescale. For specifically those children in care the rate of completed return interviews stood at **90%** and the timeliness of completion was **82%**.

Focus has shifted from the identification of partners collective datasets and continuous development of how the data is presented and report on, to refocus on the outcomes achieved through the rigorous interpretation of partnership data. Additionally, there has been a significant level of development around the review of MACE processes and the way in which meaningful data is captured as a result of these process changes. These changes have enabled the ability to establish and monitor KPIs within MACE which intend to ensure risks of child exploitation is reviewed and responded to within a timely manner through the MACE process. Additionally, through the implementation of Power BI subscription services, we are now able to communicate automated real time performance across the partnership on an individual agency level in a secure and consistent manner. This has seen an improvement in the timeliness of return home interviews, as well as completion of actions tasked from MACE within timescales.



What is CDOP?

The Lincolnshire Child Death Overview Panel (CDOP) reviews the death of every Lincolnshire child to see if any lessons can be learned. We are aiming to prevent future deaths where we can and to improve care and support for children, their families and communities.

The number of child deaths in Lincolnshire notified to CDOP between 1st April 2020 and 31st March 2021 was 33. Lincolnshire CDOP has completed 35 child death reviews during this period (another 30 cases remain open, with 18 awaiting the outcome of a coroner's inquest. Nationally there remain long delays in the coronial system).

Quick facts:

66% of all deaths reviewed were male
57% of deaths were under one year of age
88% of deaths were of white British ethnicity, 6% white other and 6% other mixed background.
The commonest place of death was a neonatal ward/unit, as is the case nationally.

CDOP recommendations:

1. CDOP identified a lack of regional availability of neonatal intensive care cots escalating this to the local neonatal network, with plans being made to increase the number of cots.
2. Public Health and ICB colleagues supported increased COVID-19 vaccination during pregnancy.
3. CDOP recommended a targeted weight loss service for overweight and obese pregnant women.



5 children were known to have a disability

20% children were known to social care, comparable to the national average of 21%.

The commonest causes of deaths are neonatal or perinatal events, for example, being born prematurely, or a genetic/congenital anomaly.

Adverse childhood experiences (ACEs)

This is the first year the presence of ACEs has been considered in all child deaths. 8 children were identified to have ACEs; the highest number of ACEs in a single case was 7.
The commonest ACEs found were parental separation and mental illness in a close family member.

Modifiable factors

These are factors where, if actions could be taken through national or local interventions, the risk of future child deaths could be reduced.
Modifiable factors were identified in 40% of the deaths reviewed (national average is 39%). The commonest factor is still cigarette smoking during pregnancy or within the household - this is also the commonest modifiable factor nationally.

Education Subgroup – Input from Kathryn Creaser, Director of Safeguarding for the Priory Trust, Chair of ESG

ESG has representation from a wide range of organisations and educational establishments. Members include professionals from the LSCP, Lincolnshire County Council (including Childrens Services, Safer Communities, Virtual School, Safeguarding in Schools Team, Education Team & Early Years Team), Primary Schools, Secondary Schools, Colleges & Special Schools.

Over the last academic year, the Education Subgroup (ESG) has supported the work under the strategic priorities through a number activities including forming task and finish groups to review and provide feedback on policies and procedures that impact upon education settings, for example the Model Misuse of Drugs Policy and the CE Screening Tool. ESG members have supported the LSCP Campaigns by identifying prominent issues within their settings/communities that they felt required a focus, and by facilitating LSCP staff to come to their settings and work with their children and young people in order to capture their views on key issues, for example emotional wellbeing, and ensure that the campaigns produced are a reflection of what children and young people need.

ESG has also recently taken on the scrutiny and assurance of Operation Encompass. This is a big change for ESG, and will allow members to hold the Police and partners to account for Operation Encompass, whilst providing an update report for the Operational Delivery Group. The partnership scrutiny that the ESG will provide should provide wider assurance on the effectiveness and impact of Operation Encompass.

ESG members also took part in the consultation for the DfE document 'Working Together 2023', to ensure that the feedback from different educational professionals was included within the partnership consultation response, and the response reflects the feelings and views of professionals working on an operational level.

Due to the wide range of professionals who are part of ESG, members are able to benefit from a wealth of specialist knowledge and a wide-reaching forum in which to ask questions, discuss ideas and find resolutions to any issues.

Work with the Stay Safe Partnership (taken from the Annual Update to the Public Protection and Communities Scrutiny Committee)

ESG members work closely with the Stay Safe Team, providing feedback, sharing issues of concern facing their students and continuing to promote the Team's work across the sector.

For the academic year 2022/23, the partnership delivered sessions to 20,978 secondary and 17,762 primary students. This is an increase of 1,837 secondary students and 7,407 primary students from academic year 2021/2022. This increase is a result of investment in additional staff, and delivering a blended offer of online and in person workshops to respond to school need.

In the academic year 2022/23 the Stay Safe Team pushed boundaries in trying to reach those children not in mainstream education. To ensure the most vulnerable children in Lincolnshire have access to the secondary 'Stay Safe' Days, and delivery of Stay Safe Days to Special Educational Need Provisions increased by 58% in the academic year 2022/2023. For establishments such as special schools and Pupil Referral Units, the partnership offers a deconstructed 'Stay Safe' Day, adapting sessions to ensure best engagement.

Qualitative and quantitative data is collated and used to monitor the impact of Stay Safe interventions on pupils thinking and decision-making. This year the Partnership moved to collating feedback online, with students being asked to offer feedback electronically using either QR codes or tablets. From Year 7 to 11 students, 11,868 responses were received and from this 97.4% of students said the information would help with their future decisions, 97.7% found the information within the sessions helpful, and 98% found the sessions well presented and explained.

A Date with Dan

To support parents, the Stay Safe Team seek to provide information in an easy to access and understandable format. The Team currently offer biannual workshops over Microsoft TEAM's for parents on 'Online Safety', and in 2023 Lincolnshire Domestic Abuse Partnership offered an additional workshop on 'Navigating Teenage Relationships'. This academic year 716 parents attended our 'Online Safety' Q+A virtual session, and 216 parents attended the 'Navigating Teenage Relationships' workshop.

Feedback received from parents who attended the event was overwhelmingly positive:

"Gave me more ideas as to how to talk about online safety with my child. I did anyway, but the event mentioned a few things I hadn't thought about".

"It was brilliant, speakers were knowledgeable and informative, complimented each other well. I don't think you could improve on this. Sensitive topics handled well".

Engagement in campaigns

As a result of a recommendation from a Rapid Review, in December 2022, the LSCP connected with the Department for Environment, Food and Rural Affairs (DEFRA) to share messages around 'Keeping Children Safe Around Dogs'. The campaign was successful with one post being engaged with 73437 times, with 331 likes, 153 shares and 63 comments. Across the week, there were 50 clicks on the links, showing that people were interested in accessing more information about this topic. The contact made within DEFRA continues to be built on to share appropriate safeguarding messages.

The Q – Collaboration Group - Communications Sub-Group work closely together to ensure safeguarding messages are shared across the four Lincolnshire partnerships¹. Throughout the year, campaigns were collaborated on with LSCP taking the lead for the Summer Campaign. Partners shared nine weeks of social media messages with a key focus each week such as mental health in result weeks, water safety and missing family members. Over the nine weeks, the LSCP Facebook page showed that these messages reached 6679 individual people, showing the impact this positive collaboration can have. Further to this, LSCP's Audit and Policy Officer made contact with the East Coast Caravan Park Network and attended a meeting. In this meeting, the Summer Campaign issues were discussed and guidance and advice were provided. Directly from this attendance, two reports were made to local Trading Standards regarding shops selling vaping products to underage children.

Members from the Educational Sub-Group have provided contact with several schools to support an ongoing Emotional Wellbeing campaign, an area that young people report is their biggest concern currently. As a response to this, the LSCP and partners agreed to engage in some scoping work via these workshops to fully understand this topic. In this time period, four workshops were held with school

¹ LSCP, Lincolnshire Safeguarding Adults Board, Lincolnshire Domestic Abuse Partnership, Safety Lincolnshire Partnership

pupils ranging in age from 9 to 18 years. Work will continue on this project and, with the support from ESG, a campaign sharing the voice of the child in relation to Emotional Wellbeing will be developed and shared next year.

Schools Safeguarding Assurance

The LSCP seek assurances every year that schools and colleges are meeting their safeguarding responsibilities. The assurances are provided by a non-teaching member of the Governing Body or Board of Trustees. During 2022, in conjunction with the ESG, the LSCP reviewed the process and timings for schools and settings to provide this assurance with the aim of improving the overall assurance response.

Number of assurance returns for 2022-2023 broken down by school phase/type:

Returns across all provisions and phases: 339/386 – Total: 88% returned

Early Years/Nurseries – 5/5 – Total: 100% returned

This only covers maintained nursery settings; no data available on private/independent EYs provisions.

Primary – 257/281 (including 1 all-through) – Total: 91% returned

158 of these returns are from maintained settings (out of a total 162 maintained primaries), 97 are academies (out of 117 primary academies), and 2 from the free school primaries (out of 2 free school primaries).

Secondary – 48/53 – Total: 91% returned

2 are from maintained settings (out of a total 2 maintained secondaries), 44 are academies (out of 50 secondary academies in Lincolnshire). 1 return received from the 1 free school secondary.

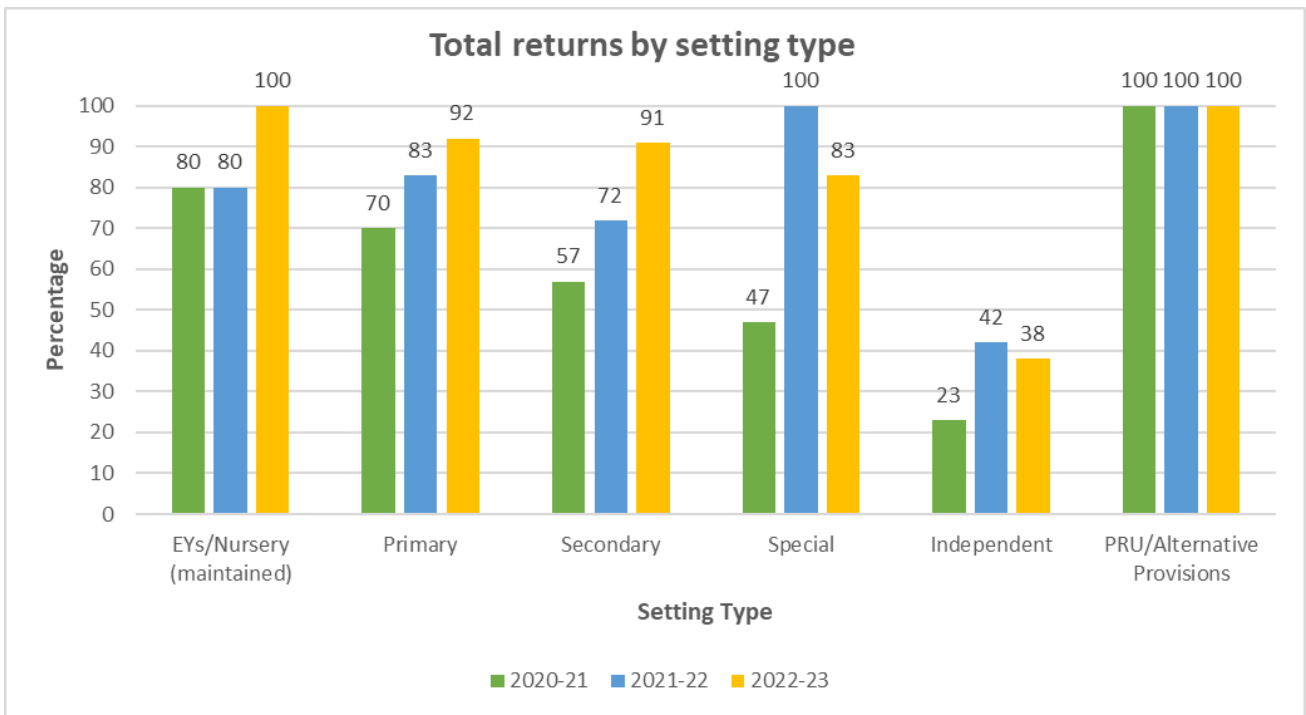
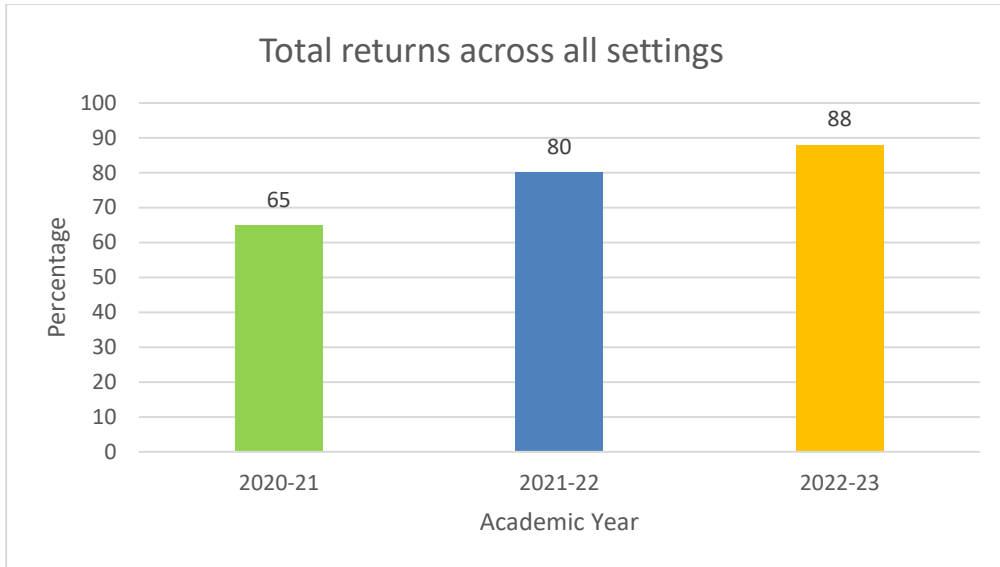
Special – 15/18 – Total: 83% returned

5 of these are maintained (out of a total 5 maintained special schools in Lincolnshire), and 10 are academies (out of 13 special academies in Lincolnshire).

Independent – 9/24 – Total: 38% returned

PRU/Alternative – 5/5 – Total: 100% returned

For the first time we are also reporting on the increase in assurances provided by setting type. Whilst there were significant increases in returns from Primary and Secondary Schools, we did see a drop in returns from Special and Independent Schools.



Whilst this is not a statutory requirement of schools, and some academies may use alternative methods of assurance, we continue to strive and succeed in increasing the number of returns year on year. We are also currently exploring how feasible it would be to engage with early years settings and childminders to request that they also provide assurance of compliance with their safeguarding duties and hope to be able to report on that in 2024.

[Junior Online Safety Officers \(JOSO\) \(Rachel Thomas – Friend, LSCP Training Support Officer\)](#)

The Junior Online Safety Officer training (JOSO) is aimed at Year 5 pupils to provide them with the knowledge, skills, and confidence to help spread e-safety messages throughout their school with pupils, teachers and parents, in their role as a JOSO (Junior Online Safety Officer).

Participating schools and pupils take part in two taught virtual sessions, delivered by Online Safety Officer Dan Hawbrook, with support from a LSCP Training Officer. JOSOs are also invited to attend a group virtual Review session, which is an opportunity to share their experiences of being a JOSO so far and ask any questions.

Upon completion of the two training sessions, a folder of 'Missions' is sent out to the school for JOSOs to complete. The 'Missions' reflect the seven areas of the 'The Education for a Connected World Framework'; which is the knowledge children should know in relation to their age range, in terms of current online technology, its influence on behaviour and development, and what skills they need to be able to navigate it.

JOSOs can accrue points (XP points) for completing certain activities for each mission, with the aim to incentivise engagement throughout the year, and to focus activities in key areas, namely those that have whole school involvement, engagement with parents and younger pupils-key stage 1 and 2.

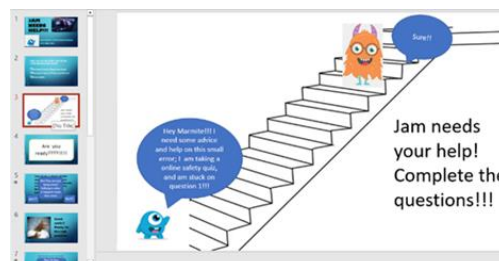
Numbers participating in JOSO Sept 2022- July 2023:

Participating Schools = 28

Total number of JOSOs trained = 97

In July, all JOSOs who had taken part in the scheme this year were invited to a virtual Celebration. The virtual celebration showcased all the fabulous work completed by JOSOs. Six schools were able to join us for the virtual celebration. JOSOs received individual named certificates for the work they had submitted, under the categories of 'Brilliant Engagement', 'Awesome Creativity' or 'Super Commitment'.

'Our JOSO's have been involved in a whole school assembly to celebrate World Internet Day in May this year, where they talked about internet safety and introduced the 'Hand of Help', answered questions, and encouraged discussion. They then decided to focus on bullying online as a 'mission' as there had been an incident in their class, and produced 2 assemblies- one for KS1, including Reception, and another for KS2, to cover this subject, tailoring their presentations to the appropriate Key Stage. They worked in pairs to produce the assemblies, without adult support (just encouragement and a little guidance!). They set up and led both assemblies; they did a really good job facilitating discussion and getting their points across; both assemblies were well received'.





Our (JOSO) internet safety game has been introduced at wet playtime and is based on snakes and ladders and has questions to do with being safe online'

'Every class has a worry box. We also have a lot of competitions, like to make online safety posters. We can't wait for our assembly. we have been planning an assembly and posters and e safety day. We also talked to the classes and did a debate. We are planning on creating a board for us.'



'Over the last term, we have set up an Online Safety Board and had an assembly about this. We are getting more people coming to talk to us every day from how many there used to be. We are now happy to say that we have hopefully, sorted out most people's worries about Online Safety'. (JOSO)

*'Thank you for all of your support'
(JOSO Link teacher)*

*'They (JOSOs) have been very proud having the job and responsibility for the year. They have been great ambassadors around the school'
(JOSO link teacher)*

Review of use of restraint – Lincolnshire Secure Unit


Working Together to Safeguard Children 2018 states, *"Where there is a secure establishment in a local area, safeguarding partners should include a review of the use of restraint within that establishment in their report, and the findings of the review should be reported to the Youth Justice Board."* The review on the use of restraint within Lincolnshire's Secure Children's Home was undertaken by the Local Authority Designated Officer (LADO) and was received by the LSCP Operational Delivery Group in November 2023. The report covers the use of restraints between April 2022 and March 2023.

On one assurance visit, the restraint review was completed jointly with Ofsted who happened to be inspecting the unit that day. Ofsted noted:

"Management oversight and scrutiny of restraint are extremely thorough. Managers critically analyse incidents, seeking to highlight good practice as well as points for learning." The LADO concurs with Ofsted's highlighting of the opportunity to improve the timeliness of some of the post restraint de-briefs with staff but provides assurance that these are always completed prior to an incident log being closed.

The report concludes that: *"Considering all the information checked during the reviews, information from Reg 44 visits and the insight provided by the LSU deputy managers during each review visit, we have no concerns about the culture and the practice related to restraints within the LSU."*

Appendices

A	LSCP Annual Training Report	 Annual Training report.docx
----------	------------------------------------	---

