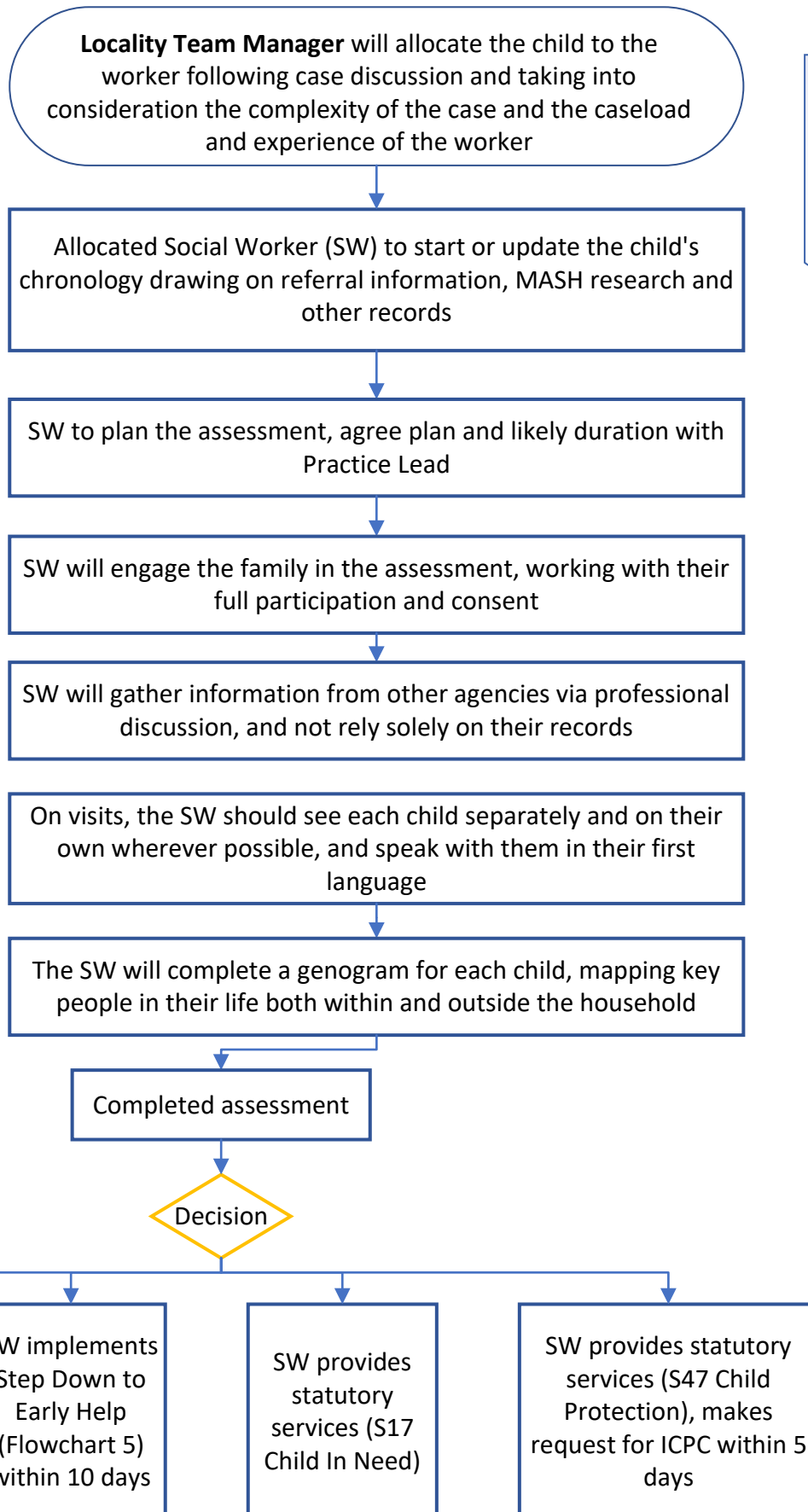


How we do things in Dorset

4. Assessment of a child's needs under the Children Act

Timescales

Allocate within 1 day of receipt
SW to visit within 3 days of referral
SW to visit child every 10 days
TM review progress within 10 days of referral
SW completes assessment within 20 days of referral
TM may permit up to 35 days for assessment
Assessment completed and shared with family within 45 days from referral



SW to follow SW Practice Standards throughout assessment

Updating assessments

Child & Family Assessments should be updated as a minimum every 6 months or following significant incidents (CP should be in line with Conferences). For CiC, the assessment should be updated every 12 months or if a significant incident/event would determine that the assessment needs updating sooner