

## **Guidance For Practitioners On Children Missing Education (CME), Children Missing Out On Education (CMOOE) and Elective Home Education (EHE)**

### **Introduction**

All professionals have a responsibility to ensure that children have suitable education in place which is safe and suitable. This guidance is therefore for all practitioners regardless of role.

This guidance contains:

- Explanation of key terms
- Process for all practitioners to follow to ensure that education is safe and suitable
- Process for Inclusion Leads to follow to ensure that EHE is suitable

### **What is CME?**

The 2016 statutory guidance for local authorities on Children Missing Education (CME), published by the Department for Education, states: "All children, regardless of their circumstances, are entitled to an efficient, full time education which is suitable to their age, ability, aptitude and any special educational needs they may have. **Children missing education are children of compulsory school age who are not registered pupils at a school and are not receiving suitable education otherwise than at a school.**"

### **What is CMOOE?**

A wider definition of children missing education is **any child of statutory school age who is missing out on a formal, full-time education** (hence CMOOE). By 'formal', we mean an education that is well-structured, contains significant taught input, pursues learning goals that are appropriate to a child or young person's age and ability and which supports them to access their next stage in education, learning or employment. By full-time we mean an education for at least 18 hours per week. The expectation is that the majority of children will have education provision of 25 hours a week.

### **What Is Home Education?**

Elective home education is an equal alternative to school education. It is recognised that parents may choose home education for a variety of reasons and deliver it in a variety of ways. As stated in the DfE Guidance, April 2019, 'Educating children at home works well when it is a positive choice and carried out with proper regard for the needs of the child'.

Elective Home Education (EHE) is the term used by the Department for Education (DfE) to describe the education provided by parents and carers at home, rather than providing education for their children by sending them to school. **This is different to home tuition provided by a Local Authority or education provided by a Local Authority other than at a school (known as EOTAS).** Children educated at home are not registered at mainstream, special or independent schools, academies, free schools, Pupil Referral Unit (PRUs), fulltime college courses or children's homes with education facilities.

**Practitioner Process To Ensure Education Is Suitable**



**Escalation Options:**

**Stage 1:**

1. Raise child at monthly CMOOE Action Group  
or
2. Raise child at monthly CIC CMOOE Action Group  
or
3. Raise with Line Manager

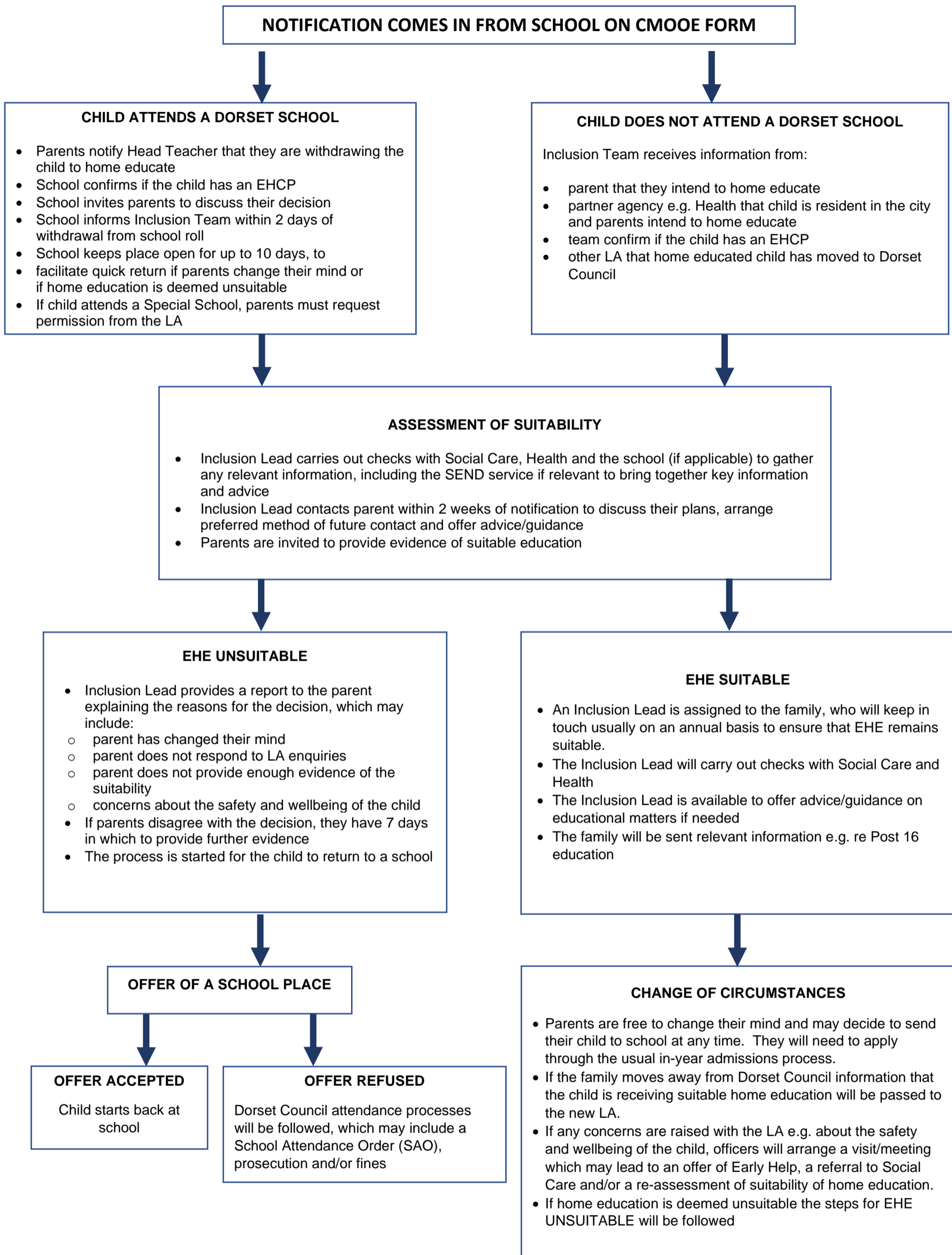
**Stage 2:**

4. Escalate to SEND Team Manager  
or
5. Escalate to Virtual School Head Teacher  
or
6. Raise at Line of Sight Meeting

**Stage 3:**

7. Escalate through line management structure  
or
8. Escalate through QARO

**Guidance For Inclusion Leads On Elective Home Education**



Please see the Dorset Elective Home Education Policy for further information.