

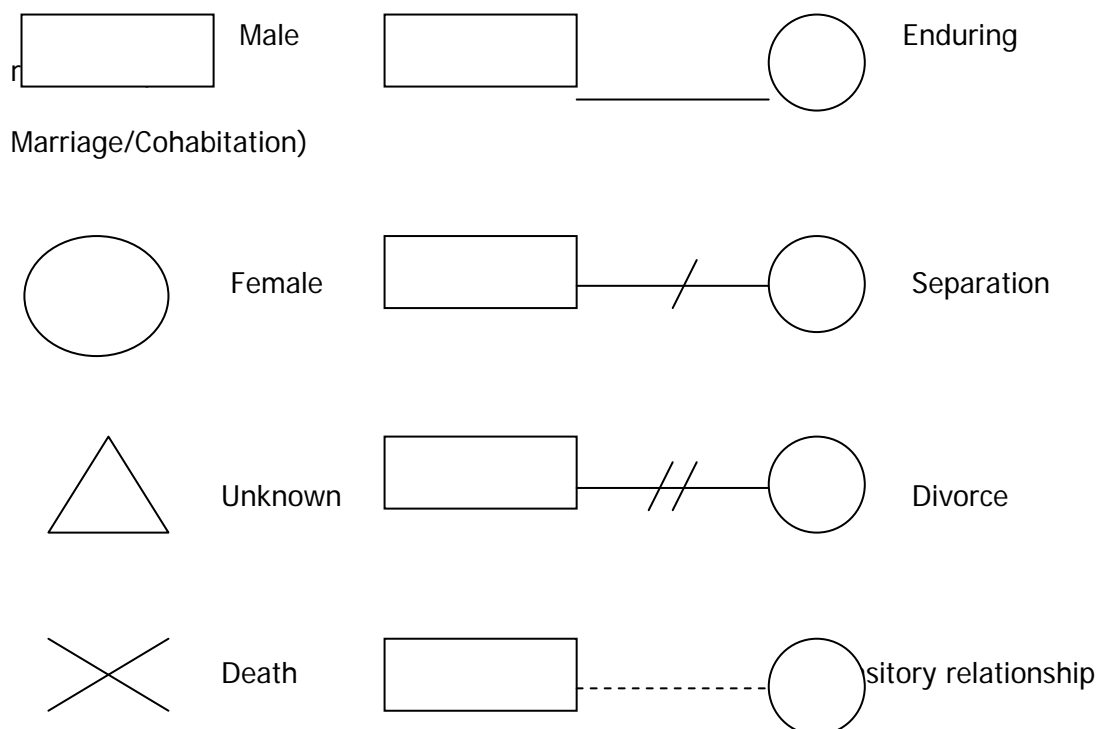
APPENDIX 7 – Guidance on Genograms and Ecomaps

Using genograms and eco maps

We have also found the use of genograms and eco-maps particularly helpful as a way of gathering information about the family and presenting it clearly.

A genogram is a type of family tree which contains additional information about the family composition. It presents key information about the family in diagrammatic form and can include social data such as births and deaths, age and sex of family members and occupation.

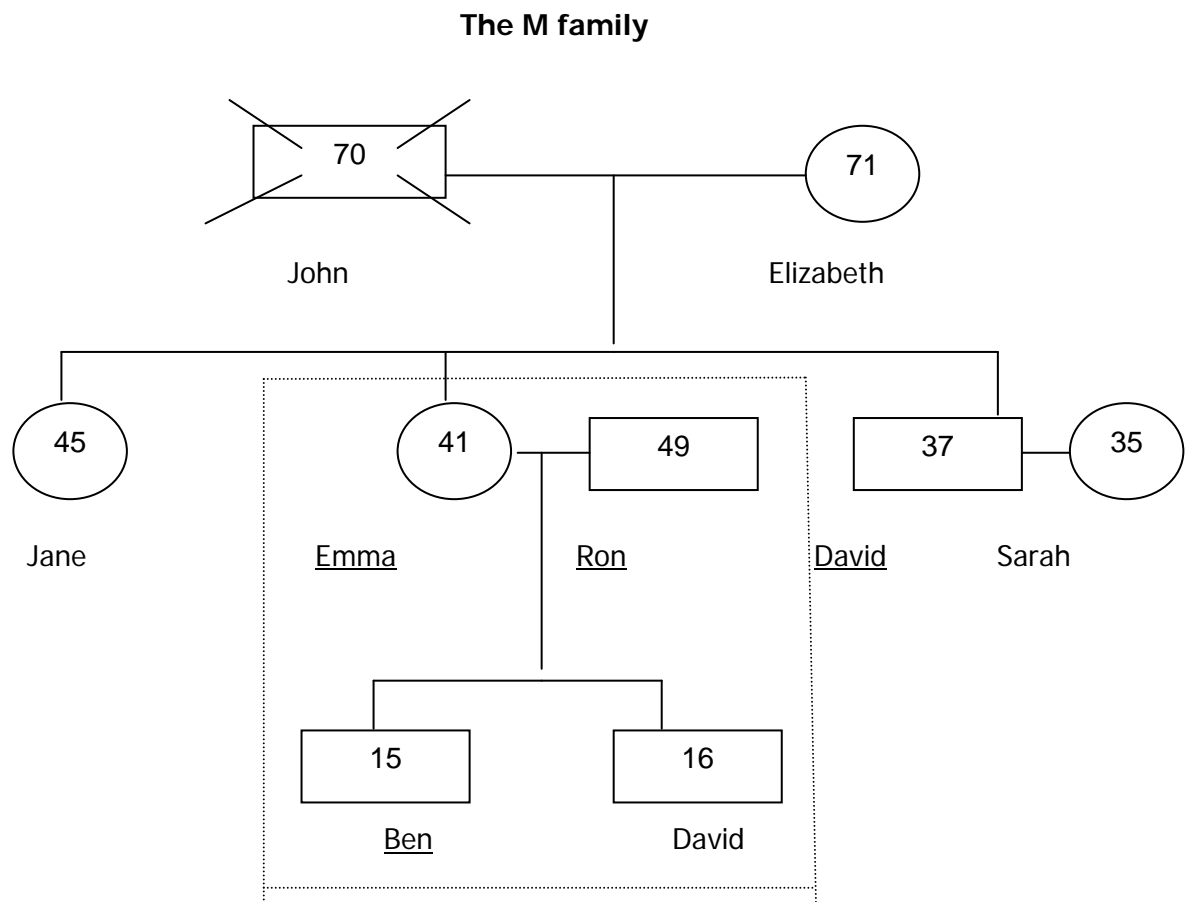
Within the genogram there are specific symbols for different items:



The genogram can be used to identify those family members who are aware of the abusive behaviour and those are not. This can be indicated by underlining or drawing a circle round them. It is also useful to use the information from a genogram drawn by family members to compare with a genogram drawn by the young person themselves. This can reveal differences in understandings and how different family members view their relationships with one another.

Other useful information can also be indicated on the genogram. For example, how family members get on with one another. A dotted line can also be drawn around those individuals who live in the same household as one another.

An example of a completed genogram would look as follows:



Underline who knows about the behaviour

..... A dotted line identifies the family unit