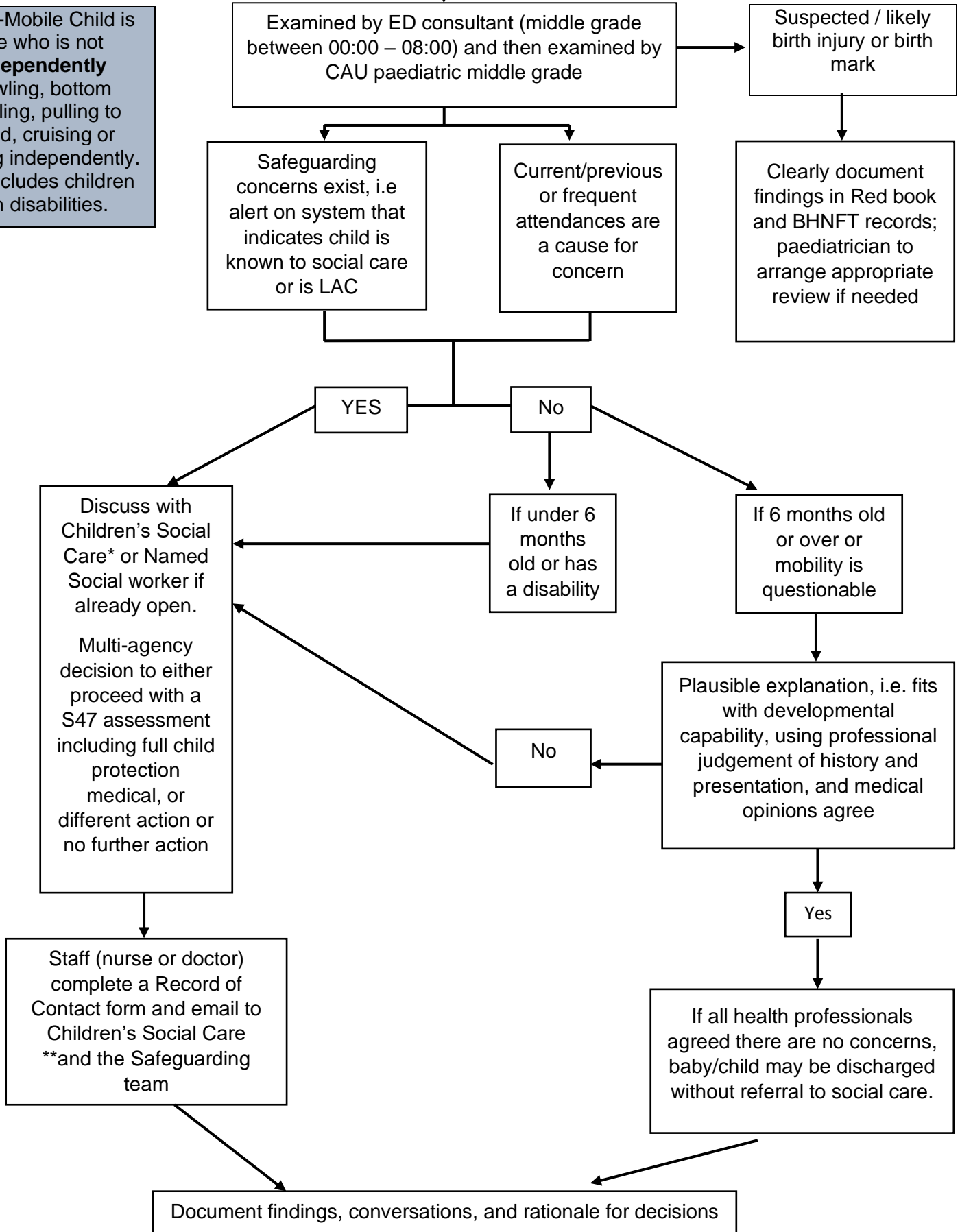


Bruise, mark or injury in non-independently mobile child

A Non-Mobile Child is one who is not **independently** crawling, bottom shuffling, pulling to stand, cruising or walking independently. This includes children with disabilities.



*Social Care in hours contact number – 01226 772423 - out of hours contact number – 01226 787789

**email MASH@barnsley.gov.uk and BHNFT safeguarding team barnsleysafeguardingchildren@nhs.net