

# Right Help, Right Place, Right Time

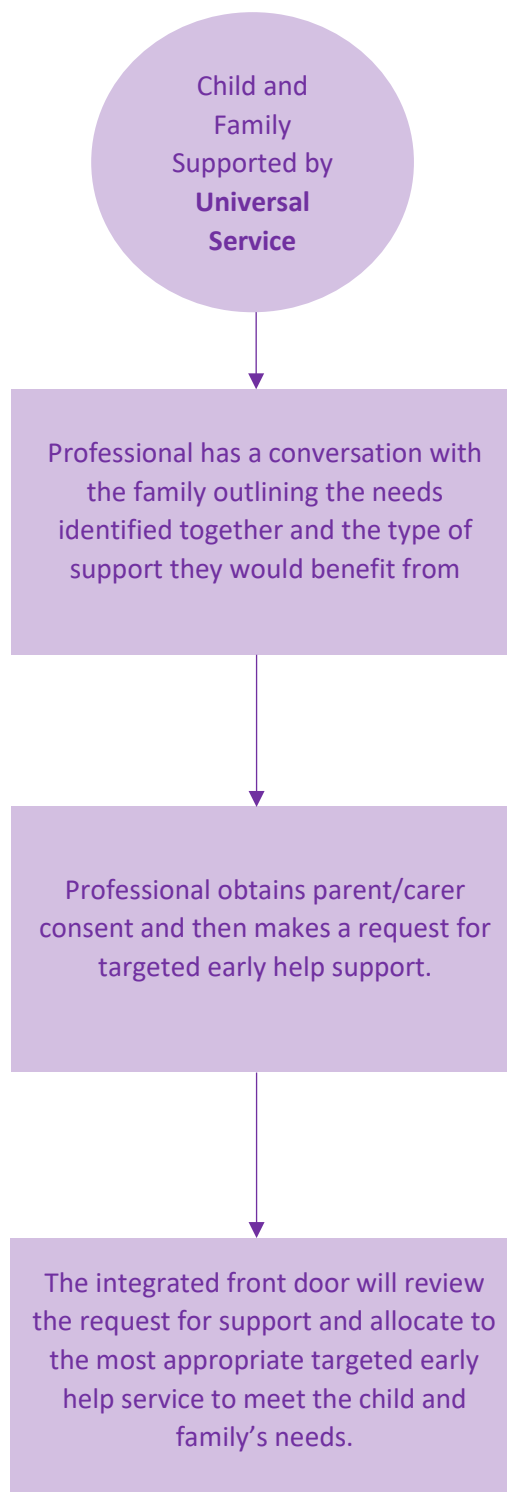
## Step-up / Step-down Protocol for Universal Services, Targeted Early Help and Statutory Services

The needs of children and families can fluctuate over time and move across one or more levels of the Barnsley framework of support. This protocol has been developed to help facilitate smooth transitions and ensure we are providing the right help at the right time.

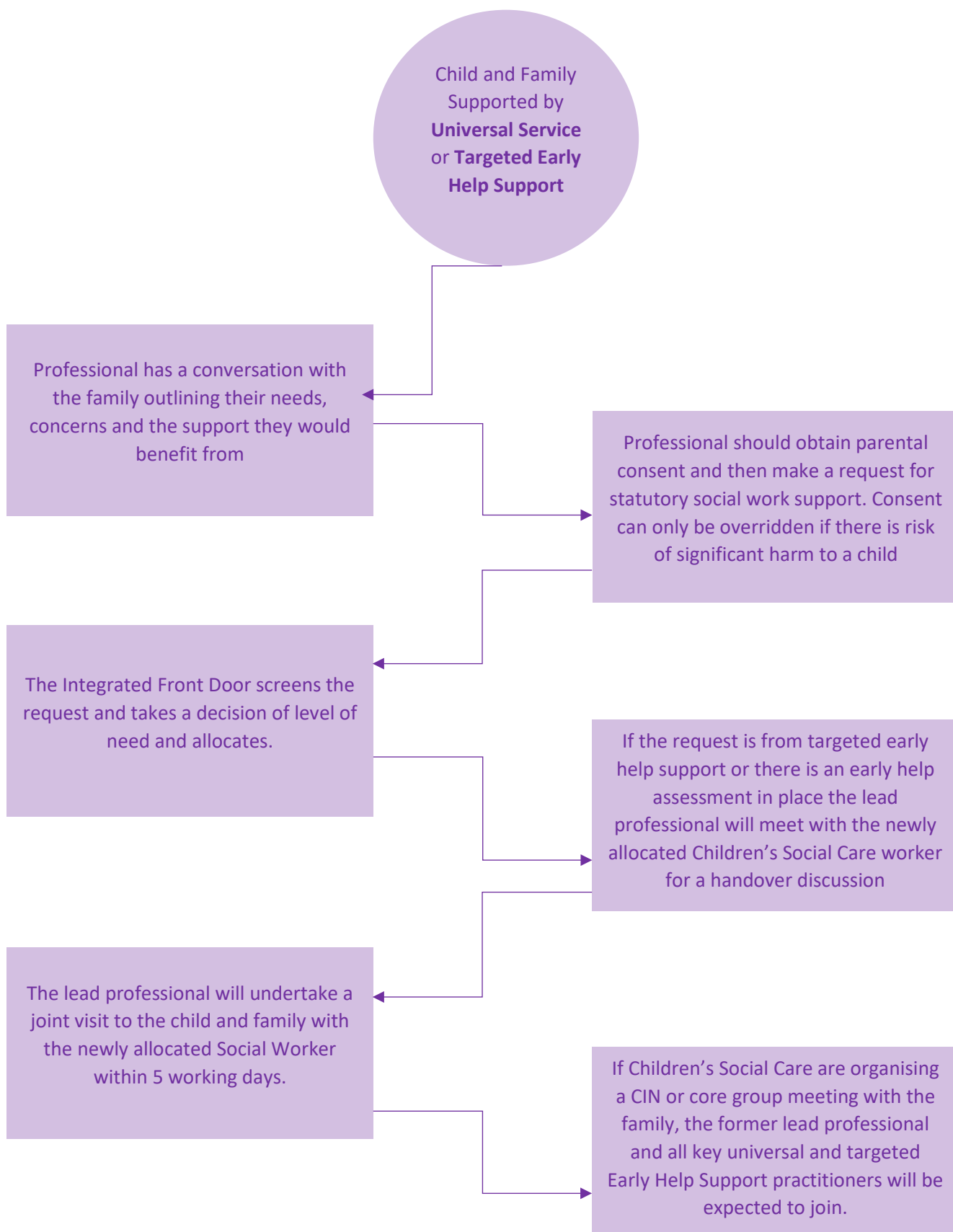
Level of Support	Definition	Partnership response
Thriving	Those who may need support to maintain high levels of wellbeing through effective prevention and promotion strategies - Around 80% of children at any one time are experiencing the normal ups and downs of life but do not need individualised advice or support. They are considered to be in the Thriving group. They may however benefit from prevention and promotion activities and strategies.	No involvement for these children is required from targeted early help or statutory social work services
Getting advice	Those who need advice and signposting - Within this group are children, young people and families adjusting to life circumstances with mild or temporary difficulties. The best intervention is within the community with the possible addition of self-support.	No involvement for these children is required from targeted early help or statutory social work services
Getting Help	Those who need focused goals-based input - Within this group are children, young people and families who would benefit from focused, evidence-based help and support, with clear aims and criteria for assessing whether these aims have been achieved.	A co-ordinated plan of support for these children should be delivered by universal services, working alongside the family, through a team around the child approach. With the family's consent targeted early help support can also be explored through an Early Help Assessment
Getting more help	Those who need more extensive, specialised multiagency SMART action planning and support- Within this group are children, young people and families who would benefit from extensive intervention. This group might include children with a range of overlapping needs which means they may require greater input.	A co-ordinated plan of support for these children should be delivered. Consideration should be given as to whether needs of the family can be met, with consent from the family, by targeted early help services working as part of a multiagency plan of support co-ordinated by a lead professional. Where there is potential risk of less significant harm, with the family's consent, a social work child in need assessment will explore the risk of harm for these children, alongside their parents/carers and professional networks. A longer-term multiagency plan of support, co-ordinated by a social worker may be offered under a Child in Need plan. On occasion an alternative plan of support may be led by a specialist service who may act as the lead professional (e.g. CAMHS, Youth Justice Service)

<p>Getting risk support</p>	<p>Those who have not benefitted from or are unable to use help but are of such risk that they are still in contact with services - Within this group are children, young people and families who are currently unable to benefit from early help support but remain a significant concern and risk. This group might include children and young people who routinely go into crisis but are not able to make use of help offered, or where help offered has not been able to make a difference.</p>	<p>These children require a co-ordinated multiagency response in order to reduce the risk of harm to them, via child protection procedures or via specialist health services</p>
-----------------------------	--	--

**Request for support stepping up from universal (schools, health services, community and voluntary services) to targeted Early Help services (getting more help)**

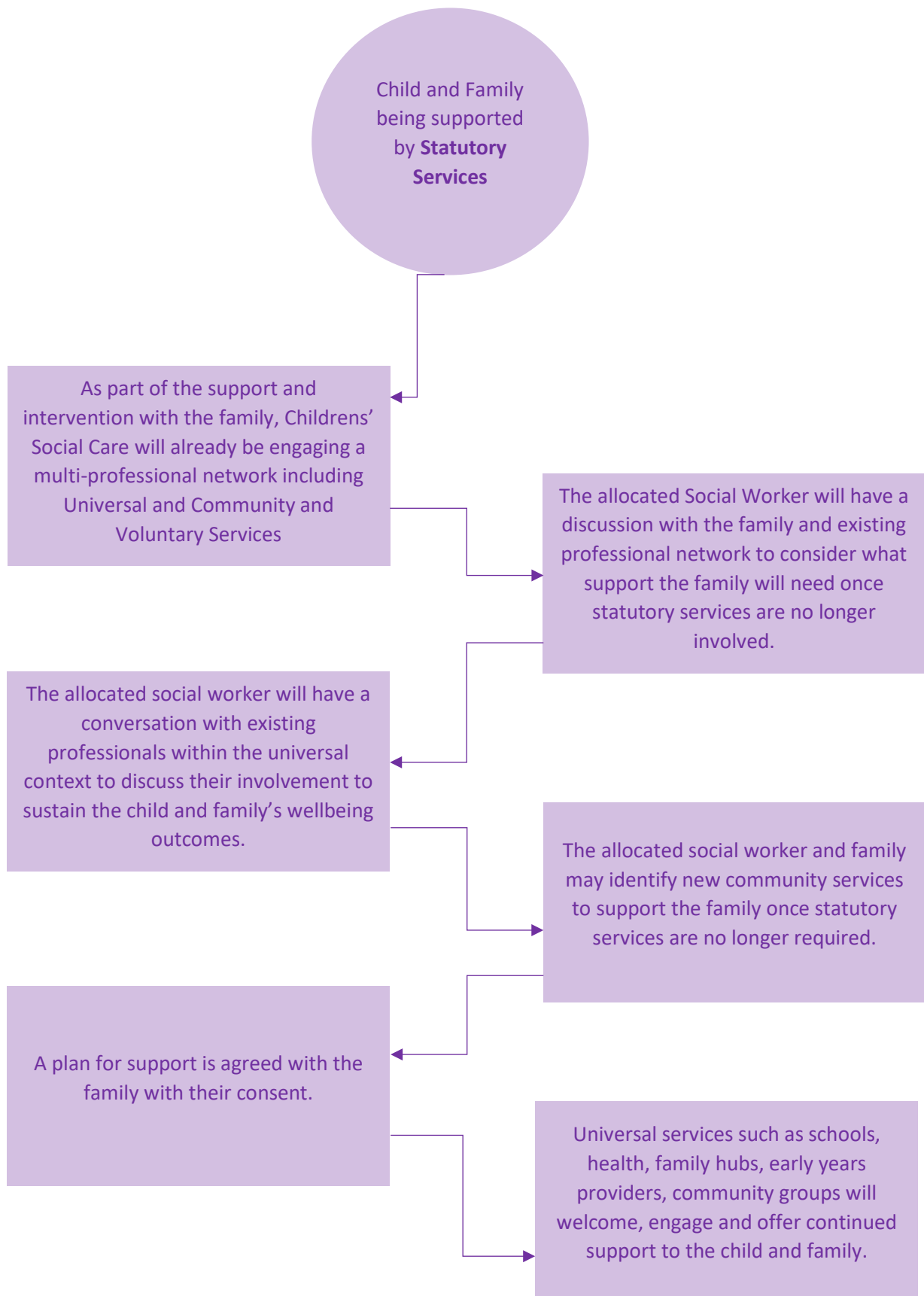


## Request for support for statutory services (getting more help and risk support)



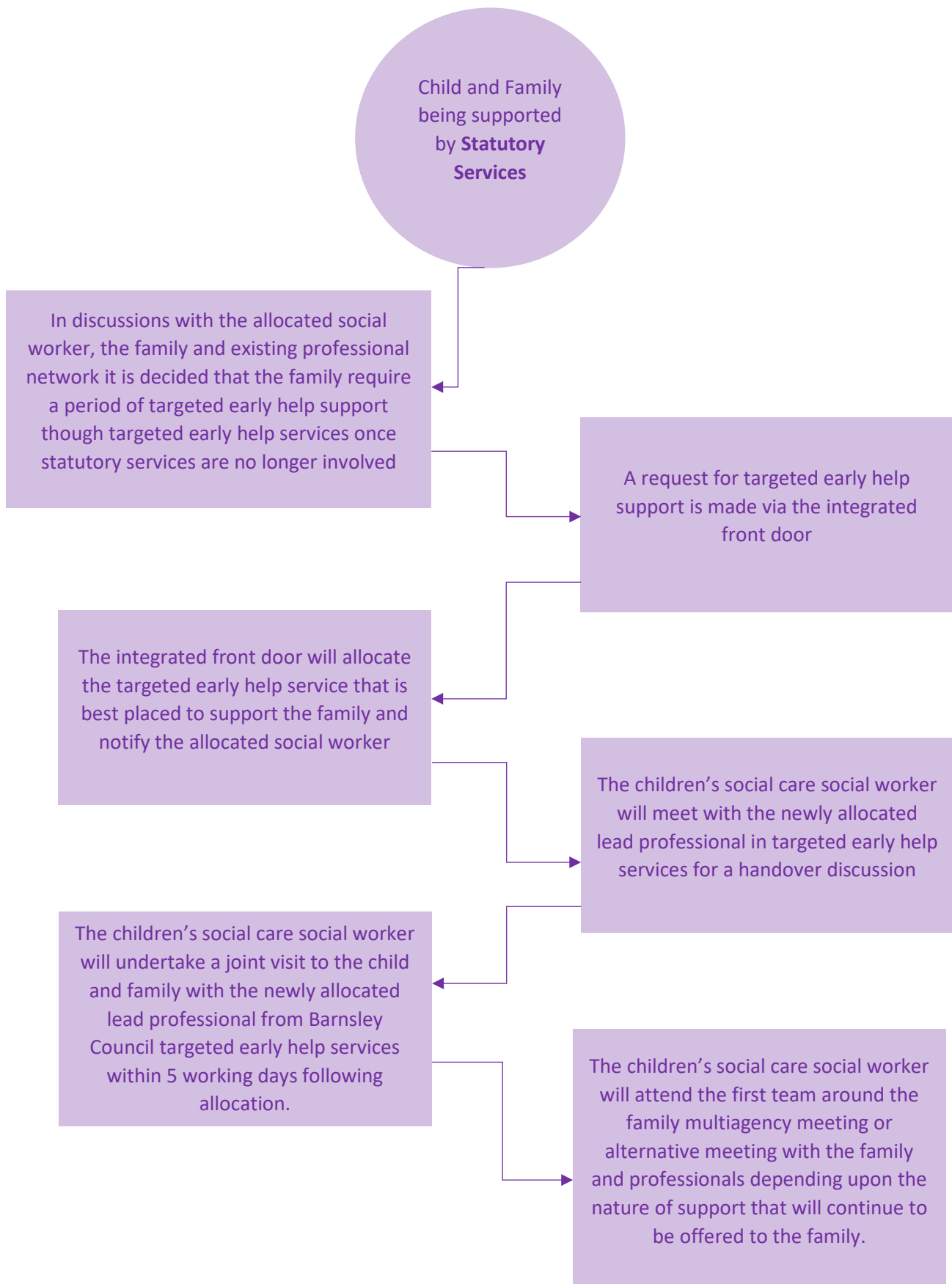
N.B Where the family have an open early help assessment (EHA) and steps up to CIN, CPP or LAC the lead professional should notify that the EHA is now closed by emailing [earlyhelp@barnsley.gov.uk](mailto:earlyhelp@barnsley.gov.uk)

## Request for Support from Universal Services following statutory intervention step down (information and advice, getting help)



N.B Where the family are stepping down into an early help assessment intervention with a team around the family the social worker or lead professional should notify by emailing [earlyhelp@barnsley.gov.uk](mailto:earlyhelp@barnsley.gov.uk)

## Request for support from targeted early help services (getting more help) following statutory intervention step down



N.B Where the family are stepping down into an early help assessment intervention with a team around the family the social worker or lead professional should notify by emailing [earlyhelp@barnsley.gov.uk](mailto:earlyhelp@barnsley.gov.uk)