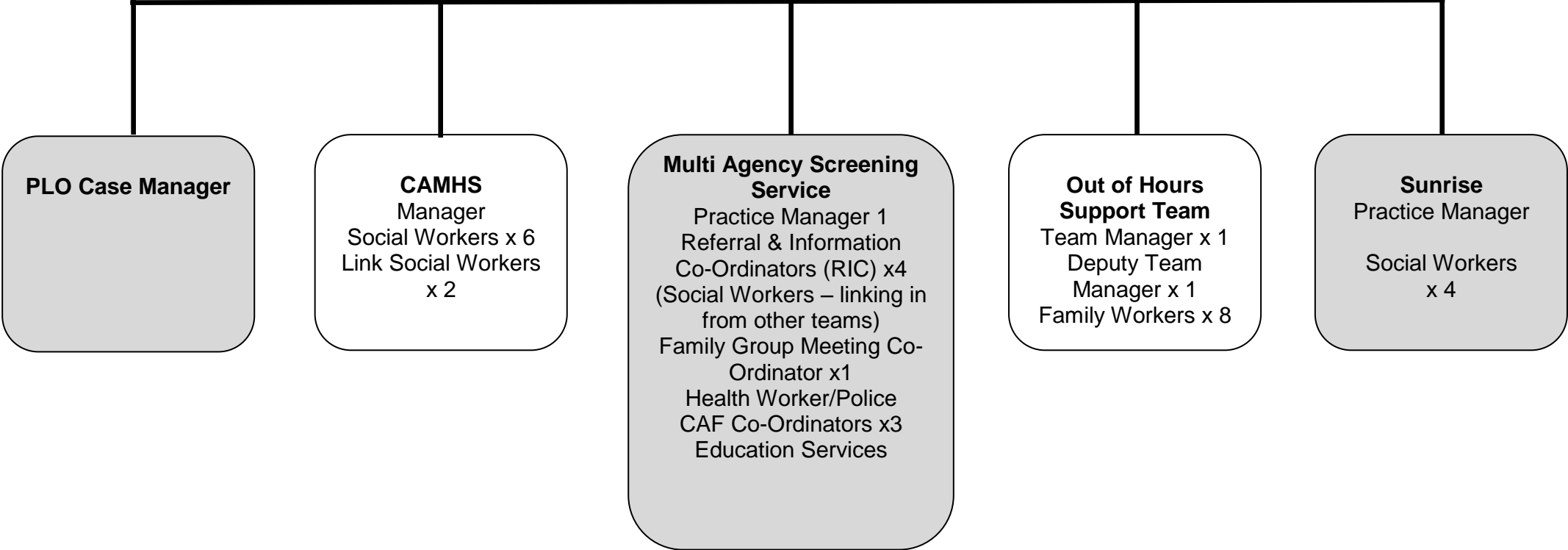
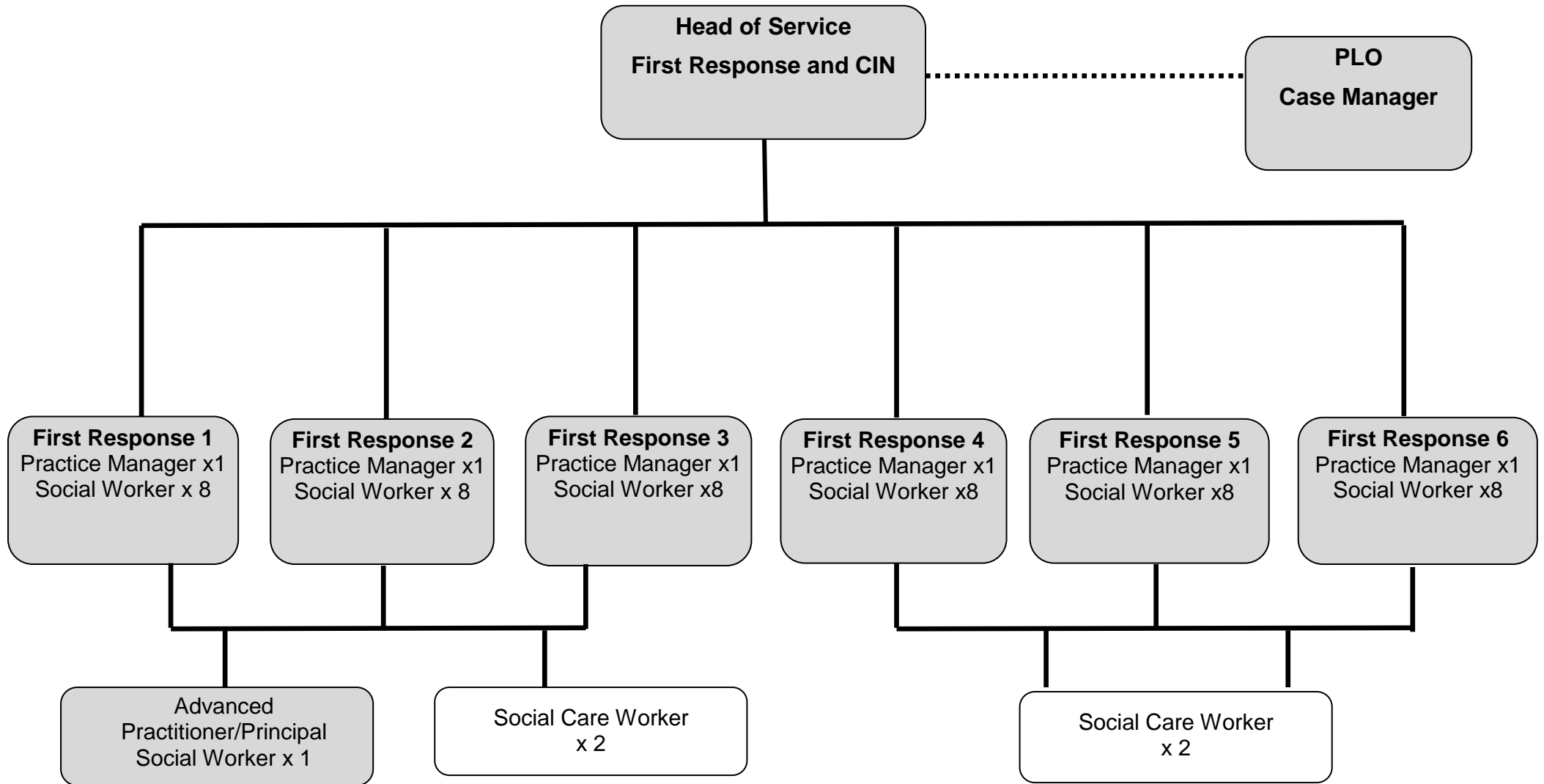
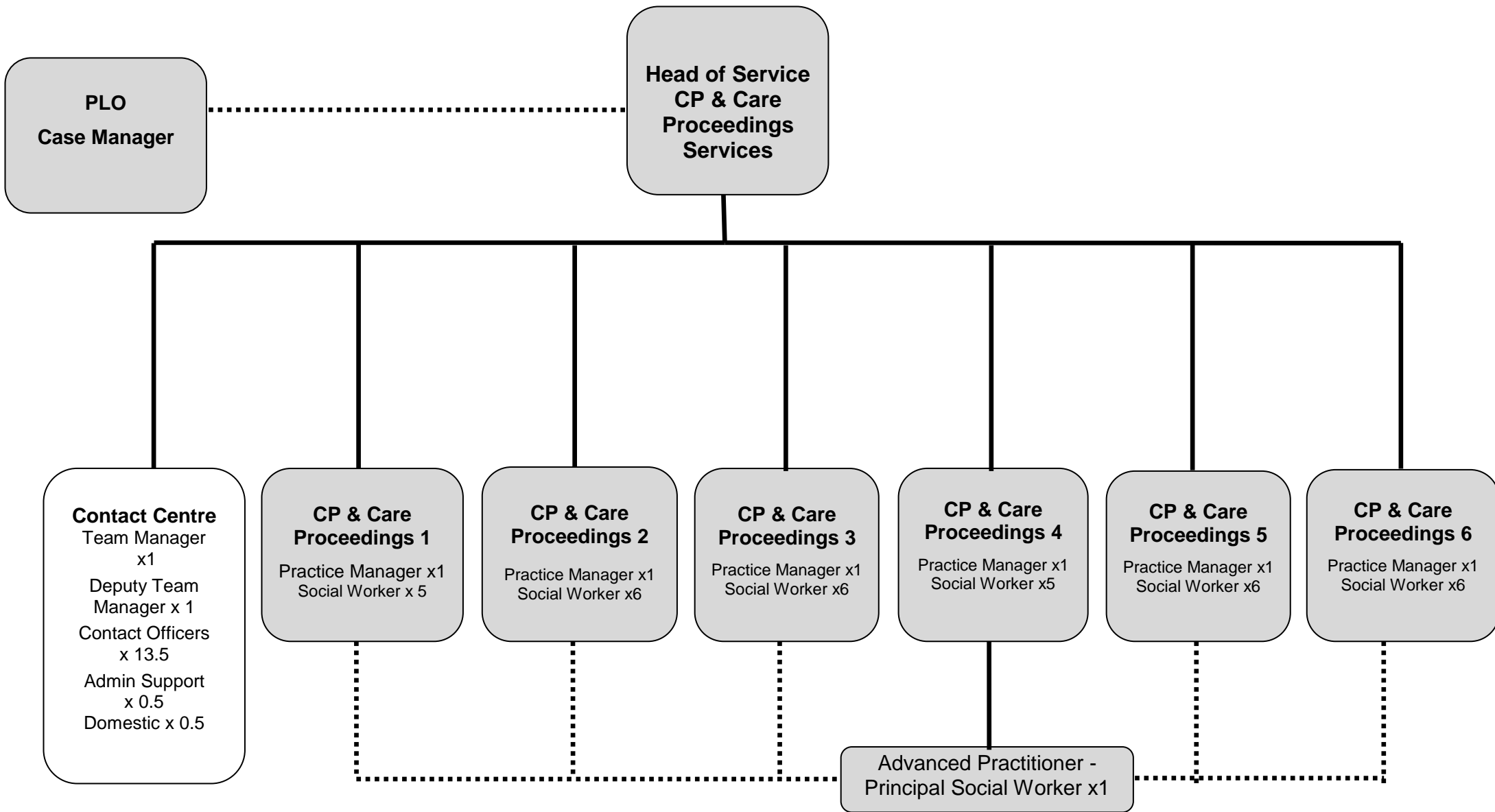


**Head of Service  
Advice & Screening**







**Head of Service  
Cared for Children  
Services**

**Regulated Service  
Improvement  
Manager**

**CFC & Care  
Leavers 1**  
Practice Manager  
(Lead for Health)  
x 1  
Social Worker x 7  
Personal Advisor  
x 3

**CFC & Care  
Leavers 2**  
Practice Manager  
(Lead for EET)  
x 1  
Social Worker x 7  
Personal Advisor  
x 3

**CFC & Care  
Leavers 3**  
Practice Manager  
(Lead for  
Transitional  
Planning)  
x 1  
Social Worker x 7  
Personal Advisor  
x 4

**Adoption Recruitment &  
Assessment**  
Practice Manager  
Social Worker x 4  
Adoption Support Worker  
x 1

**Panel Advisor**  
Panel admin x 4  
(Fostering/Adoption)  
Financial Officers  
x 2  
(SGO/Adoption/  
Fostering)  
Training Officer x 1

**Adoption Family  
Finding, Support &  
SGO**  
Practice Manager x 1  
Social Worker x 6  
Adoption Support Worker  
x 1

**Advanced Practitioner –  
Principal Social Worker  
Cared for Children**  
x 1

**Connected  
Persons  
Fostering  
Assessment**  
Practice Manager  
x 1  
Social Workers x 5  
Support Worker  
x 1

**Fostering  
Recruitment  
Assessment &  
Supervising 1**  
Practice Manager  
x 1  
Social Workers x 5  
Support Worker  
x 1

**Fostering  
Recruitment  
Assessment &  
Supervising 2**  
Practice Manager  
x 1  
Social Workers x 4  
Support Worker  
x 1

**Residential  
Units**  
Rugby Road  
Furness Road  
Martin Lane

**Placement  
Team**  
Commissioning  
Manager (temp)  
Placement  
Officers  
x 2  
Finance  
Officers  
x 2

**CHILDS JOURNEY IN CHILDREN'S SOCIAL CARE SERVICES**

