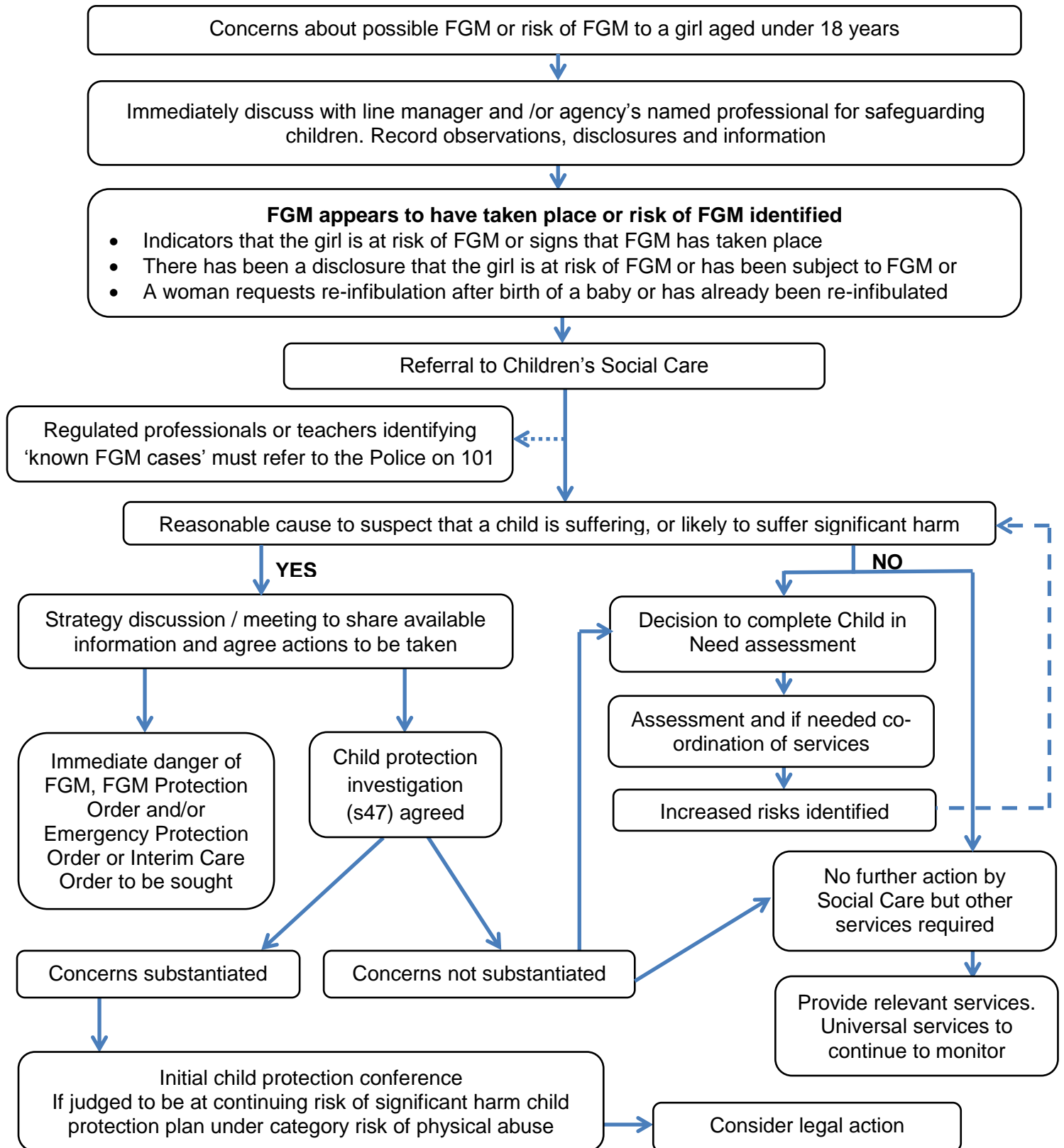


## Appendix 1: Multi-agency FGM Risk Assessment, Decision Making and Action Flowchart



### **IN ALL CASES**

- Refer to DSCB safeguarding children procedures
- Sisters, unborn babies and girls in the extended family must also be protected from harm
- Consideration of women at risk of FGM referral under adult safeguarding procedures
- Provide information about health consequences and the UK law (at an appropriate time)
- Give details for community groups for support
- Discuss specialist services for any child or adult related health or psychological needs